

Timpani

CHRISTMAS FESTIVAL

Andante

f *p* *cresc.* **Allarg.** *f*

8 *fp*

16 *rit.* **Allegro** 17 3 *ff*

39 8 3 4 Andante 19 5 **Allo Molto** 13

85 12 6 Andante 24 7 Andante 8 29 8 24 9 **Allo Molto** 17

199 11 *ff* *sfz*

206 3 12 *ff*

216

223 13 Andante 5 *p* *f* *p* 3 **Rall.**

236 14 **Allo vivace**

244 **Molto vivo** *ff*

Drum Set

Bugler's Holiday

Leroy Anderson

Allegro vivo

9 **1** *f* *sfz*

18 **2** *mf*

27

36 **3** *f* *mp*

45 *mp* *f* *mp*

54 **4** *f* *mf*

63

72 **5** *f*

81

90 **6** *f* *p* **7**

102

111 **8**

120

129 **9**

138 **10**

147

156 **11**

165

173

181 **12**

190

f *sfz* *p* *f* *f* *mf* *ff*

The Typewriter

PERCUSSION
(Bell, Typewriter)

A real typewriter, with the sound amplified, is played by one percussion player.
The typewriter bell is disconnected and the bell sound is produced on a desk bell by a second player.
As an alternative, the key clatter may be imitated on a wood block and the carriage return on a gourd.

Leroy Anderson

Allegro vivace 9

Typewriter keys

Bell

f

Carriage return

1-8

9

10

11

12

13

14

15

16

17

18

19

20

21

22

23

24

25

26

27

28

29

30

31

32

33

34

35

36

37

38

39

40

41

42

43

44

45

46

47

48

49

50

51

52

53

© 1953 (Renewed 1981) EMI MILLS MUSIC, INC.
Worldwide Print Rights Controlled and Administered by ALFRED PUBLISHING CO., INC.
All Rights Reserved including Public Performance
To purchase a full-length recording of this piece, go to alfred.com/downloads

Percussion - 2

Measures 54-60. The staff shows a series of eighth notes and rests, with a repeat sign at measure 57.

Measures 61-69. The staff shows a series of eighth notes and rests, with a repeat sign at measure 61.

Measures 70-77. The staff shows a series of eighth notes and rests, with a repeat sign at measure 70. The first ending is marked with a '1.' and the second ending with a '2.'.

Measures 78-86. The staff shows a series of eighth notes and rests, with a repeat sign at measure 78. The first ending is marked with a '4' and the second ending with a '32'.

Measures 87-92. The staff shows a series of eighth notes and rests, with a repeat sign at measure 87.

Measures 93-100. The staff shows a series of eighth notes and rests, with a repeat sign at measure 93.

Measures 101-107. The staff shows a series of eighth notes and rests, with a repeat sign at measure 101. The first ending is marked with a 'ff'.

CHRISTMAS FESTIVAL

PERC

Andante S.D.

cresc.

Allarg.

B.D. **f**

rit.

Allo

f **ff**

Andante

Allo Molto

Trgl **mf**

12

Andante

Bell

mf

Allo Molto

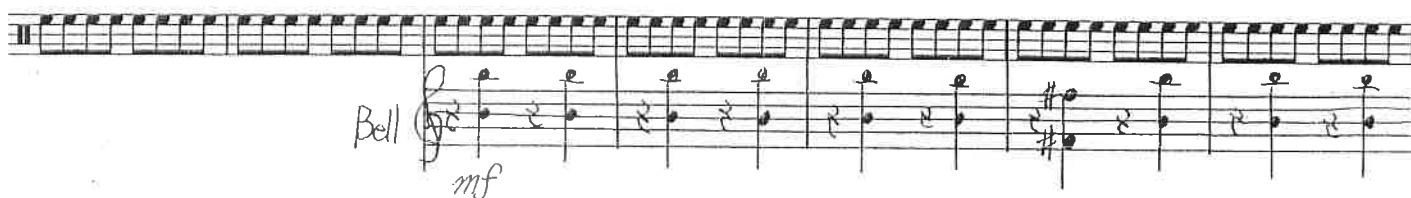
p 썰매방울

183



190

10



197

S.D. 11



205

12

3



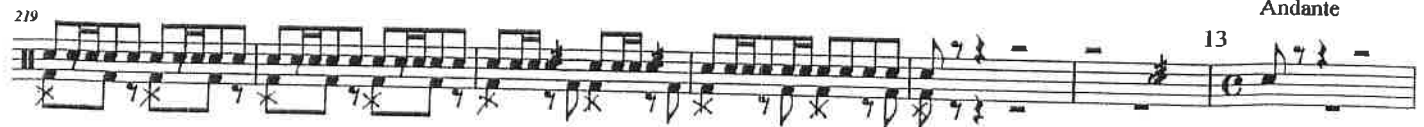
213



219

Andante

13



Allo vivace

226

8

2

14 Cym

3

S.D

Molto vivo

Rall.

sfz

sfz

ff

245

2



CHRISTMAS FESTIVAL

PERC

Andante S.D.

cresc.

Allarg.

B.D. *f*

fp

f

rit.

Allo

f

ff

Andante

Allo Molto

f

mf

Trgl

12

Andante

Bell

mf

Allo Molto

p 설매방울

190

Bell

mf

197

S.D 11

A handwritten musical score for the song "The Rose Tree". The score is written on two staves. The top staff uses a soprano clef and contains a melody with various note values, including eighth and sixteenth notes, and rests. The bottom staff uses a bass clef and contains a bass line with notes and rests. The music is in 2/4 time, as indicated by the time signature. The key signature has one flat (B-flat). The score includes a key signature change to one sharp (F#) and back to one flat. The piece ends with a double bar line and a repeat sign. The handwriting is in ink on aged paper.

205

12

3

213

219 Andante

13

Andante

13

Allo vivace

14 Cym

S.D.

Molto vivo

 \mathcal{D}